



Qapqa  
JOINING SOLUTIONS

154





Together, we create the most distinctive and integrated welding solutions for the construction of reliable and sustainable pipelines.

As a family business, we think long term. Dedicated and continuously improving, we always challenge ourselves to go the extra mile.

**Qapqa. Joining solutions.**



## ABOUT US

Qapqa Group specializes in the design of high-quality, integrated solutions for automatic pipe welding. Over 25 years, the family company has developed itself into a trusted provider of automatic welding solutions for both pipeline construction and fabrication applications.

We are winner of a prestigious innovation award, and we have an excellent reputation as a one-source supplier. Our in-depth welding knowledge and our contribution to the development of local content are important added values towards our customers. We have a blue-chip client base including renowned companies in the Oil & Gas industry.

In 2020 we acquired the PWT-division of ITW Welding, making us able, better than ever before, to take the next steps in further developing turn-key automatic welding solutions. As a result, we are continuously able to offer the latest automatic welding technology.



a Qapqa brand

## CORE VALUES

### **Integrity – we respect**

We care about being open, honest and respectful. In order to do good business, there must always be trust.

### **Responsibility – we care**

We care about what we do and for whom we do it. We acknowledge and accept responsibility in everything we do.

### **Entrepreneurship – we act**

We believe in actions rather than words.

### **Innovation – we improve**

We are open to ideas that challenge the conventional views and drive innovation. In order to stay relevant, we are continuously improving and adapting to society's changing needs.

## QUALITY

To Qapqa, quality is about satisfying the clients' needs and meeting their expectations. We are ISO 9001 certified and believe that excellent quality allows for long-term, sustainable business.

## ENVIRONMENT

Qapqa is committed to develop a long-term sustainable business by minimizing the environmental impact of our operations and by making efficient use of natural resources and energy.


We have taken action to contribute to a better environment. For example, in our facilities we use geothermal heating systems in order to achieve lower energy consumption. Qapqa is fully aligned with ISO 14001.

## HEALTH & SAFETY

Work-related injuries and illnesses can and must be prevented. Qapqa is ISO45001 certified and attaches great importance to a safe and healthy work environment. We support and promote the awareness of healthy practices among employees by organizing First Aid Groups and programs to prevent illnesses (un)related to the workplace. Additionally, we have implemented safety practices to encourage personnel to reduce and prevent risks. We conduct hazard identification, risk assessment, the implementation of safe practices and technological improvements, including training and certification.







*There is no conflict between economic prosperity and environmental stewardship. In fact, the two are mutually dependent upon each other. Businesses that embrace sustainability are more efficient, have lower costs, are less reliant on scarce commodities, increase their use of sustainable and recycled materials, have a better relationship with all of their stakeholders and ultimately, are able to offer the best quality products at the lowest possible prices.*

## **CORPORATE SOCIAL RESPONSIBILITY**

Corporate Social Responsibility (CSR) is extremely important to us. Sustainability is one of the key tenets of our policies and a focal point for our corporate processes. As a company with a global impact and a strong local focus, we are fully committed to integrating sustainability into every part of our business. We embrace sustainability as a key to our economic future.

Our products and services are designed to help our clients achieve the highest possible standard when it comes to sustainability. Additionally, our products and services help our clients in minimizing any safety and health risks and improving environmental performance and operational efficiency. Furthermore, our innovative solutions help our clients achieve important goals, such as local procurement and capacity building.

It is our mission to responsibly meet the world's welding needs; we operate safely, reduce our (negative) impact on the environment and share benefits with the communities in which we work.

We strive to be a valued member in the industry and our local communities. We provide high-level training and education that ultimately stimulates local economic development, generates job creation and builds cross-transferable skills for local workers, all with regard to employee safety and the environment.

Our highly advanced welding solutions, equipment and services, our support to the global communities in which we operate, and our work to protect and sustain the environment are helping major energy companies and pipeline construction contractors reach their own sustainability goals.





**Qapqa offers integrated solutions for pipeline construction and fabrication. We are the single point of contact for clients and manage all project interfaces; this full-scope approach reduces both cost and risk for the client.**

### PIPELINE CONSTRUCTION

Pipeline welding is a skill in its own right and requires careful preparation. Traditionally, pipeline welding was only done by experienced and properly trained professionals, mainly because of the often difficult external conditions and the need for a reliable and consistent weld quality. Our solutions enable even low-skilled workers, after having received the appropriate training, to operate the automatic welding equipment and produce excellent welds at a high rate.

With our vast experience, in-depth knowledge and sophisticated products, we are able to deliver the right solutions for every project, no matter the complexity.

### FABRICATION

The success of large-scale construction projects depends partly on the efficiency with which pipe spools and other components have been prefabricated in fabrication facilities (fabshops).

To achieve high efficiency and consistence in quality, we have developed a fabshop design ‘from the inside’. The aim of this fabshop design is to achieve an optimal logistic flow. It is possible to create a modern, efficient and safe production environment by using the right automated equipment and installations and applying clear procedures and measures. User-friendly equipment makes it less important to deploy highly qualified personnel at every location. We are in the position to deliver the entire fabshop turn-key, along with its design- and construction partners. Applying this fabshop does not only ensure sustainable employment for local, low-skilled workers in many countries, but also improves existing manufacturing methods, quality, productivity and profitability in a safe way.

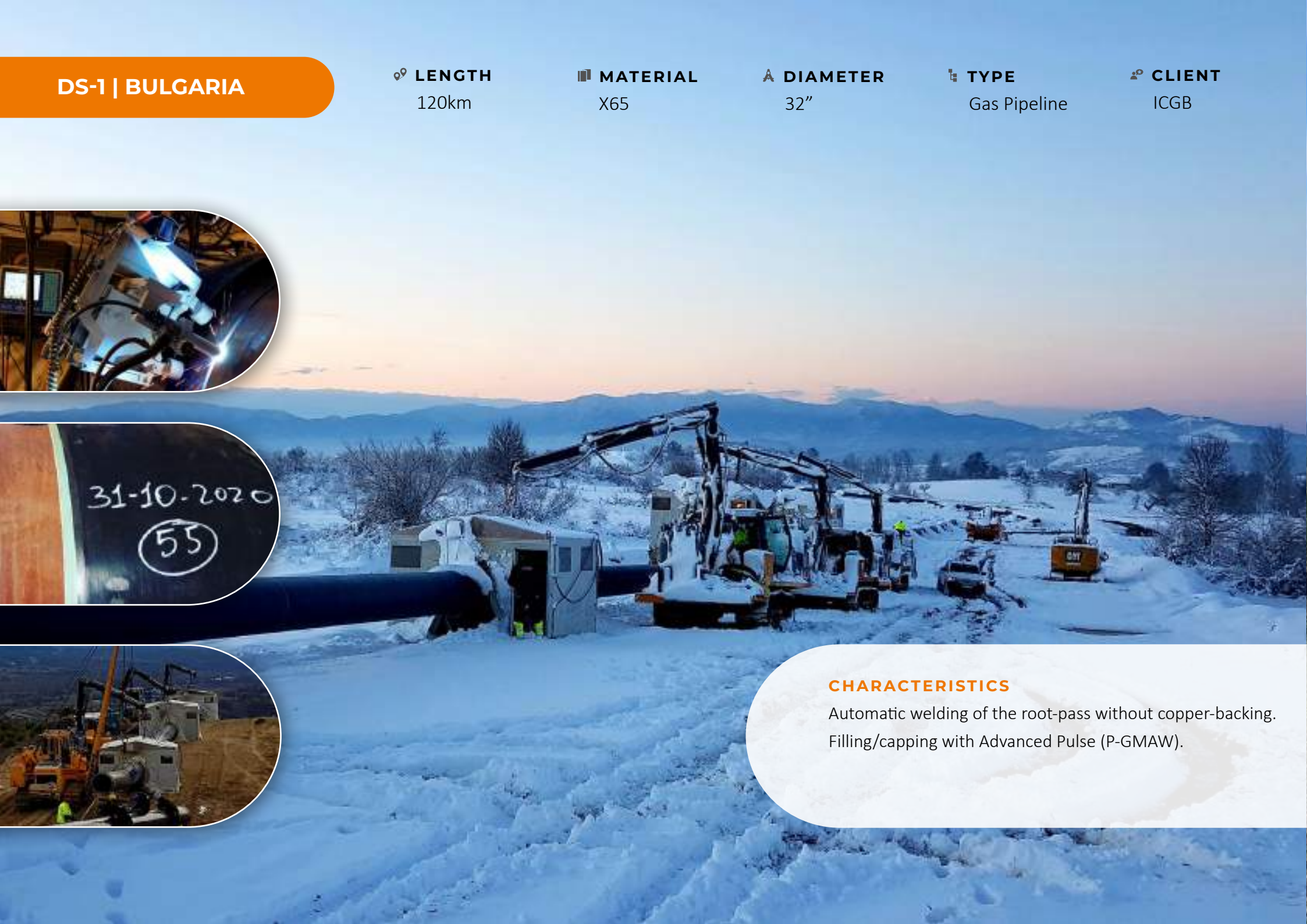


## WORLDWIDE PROJECT SUPPORT

Qapqa is active all over the World. In all continents and all climates, we are able to offer suitable welding solutions for every project.

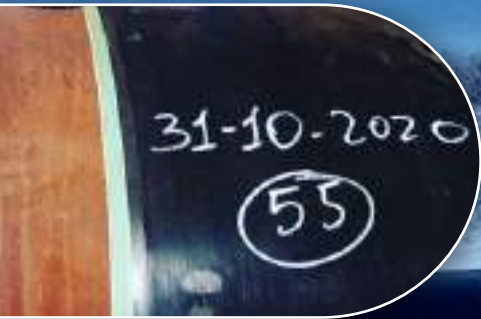




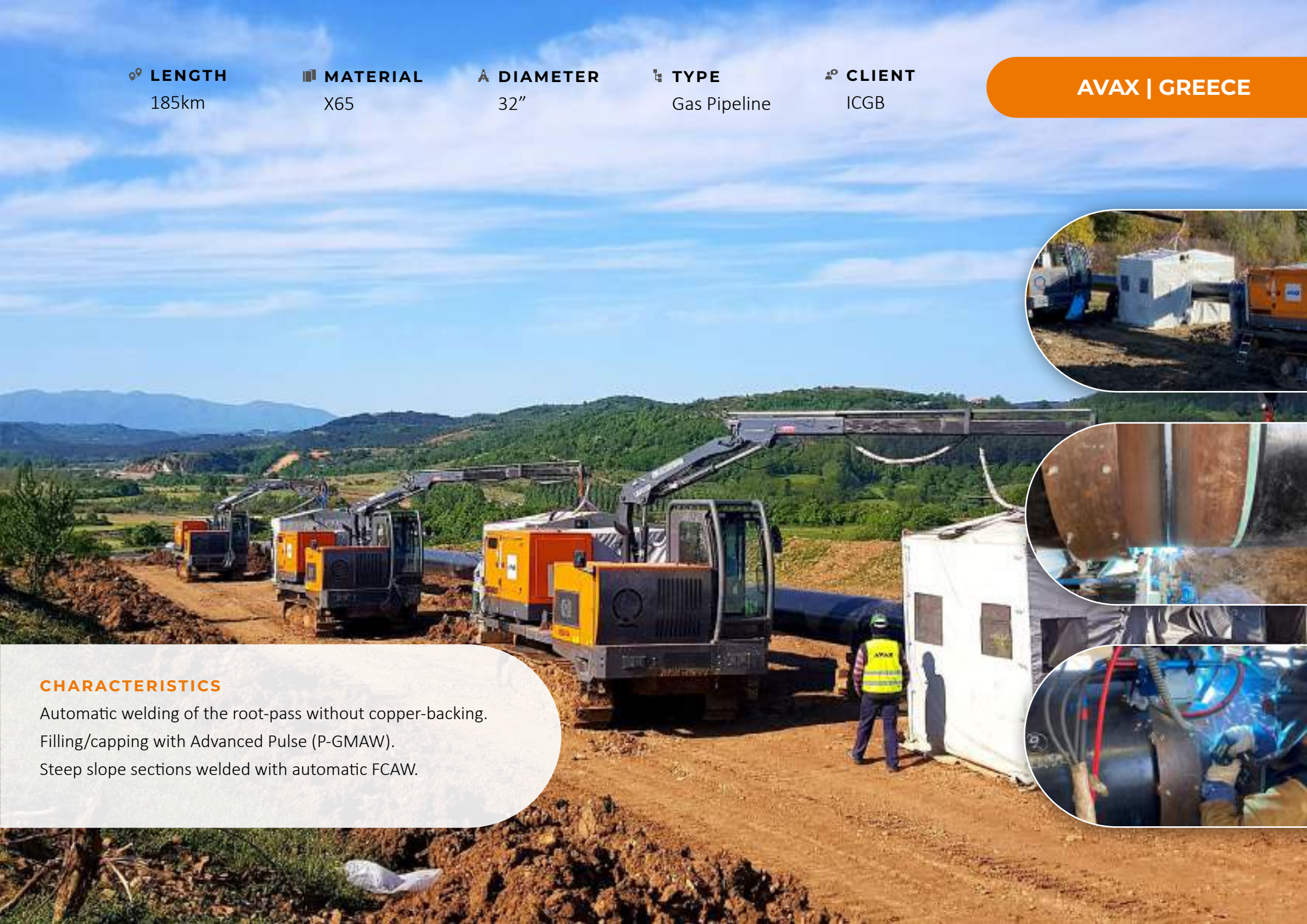


DS-1 | BULGARIA

📍 LENGTH	📊 MATERIAL	📏 DIAMETER	🔧 TYPE	👤 CLIENT
120km	X65	32"	Gas Pipeline	ICGB



**CHARACTERISTICS**  
Automatic welding of the root-pass without copper-backing.  
Filling/capping with Advanced Pulse (P-GMAW).



AVAX | GREECE

📍 LENGTH	📊 MATERIAL	📏 DIAMETER	🔧 TYPE	👤 CLIENT
185km	X65	32"	Gas Pipeline	ICGB



**CHARACTERISTICS**  
Automatic welding of the root-pass without copper-backing.  
Filling/capping with Advanced Pulse (P-GMAW).  
Steep slope sections welded with automatic FCAW.



LEAD | ALGERIA

LENGTH

90km

MATERIAL

X65

DIAMETER

34"

TYPE

Gas Pipeline

CLIENT

Petrofac

CHARACTERISTICS

Automatic welding of the root-pass without copper-backing.  
Filling/capping with Advanced Pulse (P-GMAW).

OILSERV | NIGERIA

LENGTH

300km  
(ongoing)

MATERIAL

X70

DIAMETER

40"

TYPE

Gas Pipeline

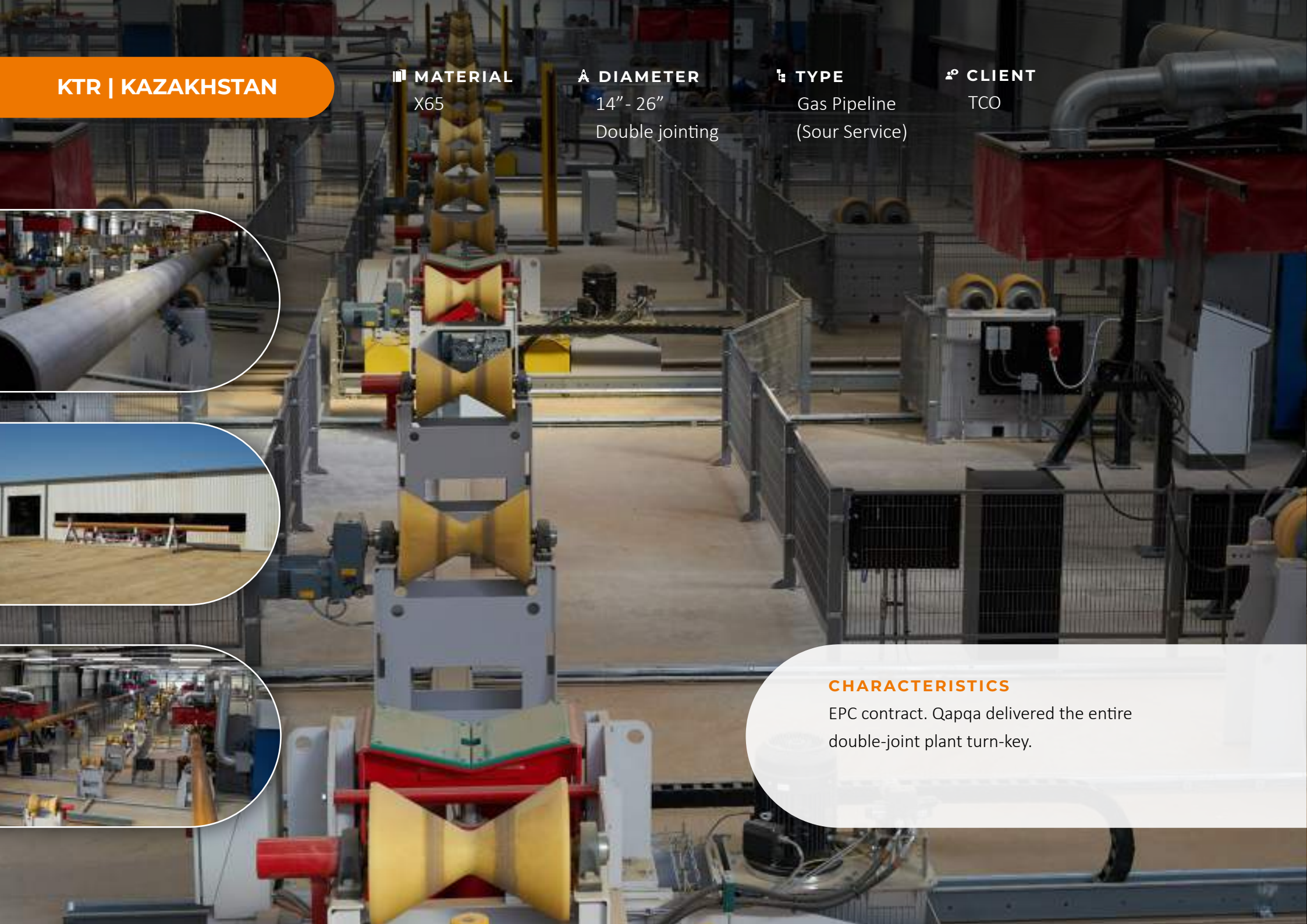
CLIENT

NNPC

CHARACTERISTICS

Automatic welding of the root-pass without copper-backing.  
Filling/capping with Advanced Pulse (P-GMAW).





KTR | KAZAKHSTAN

MATERIAL  
X65

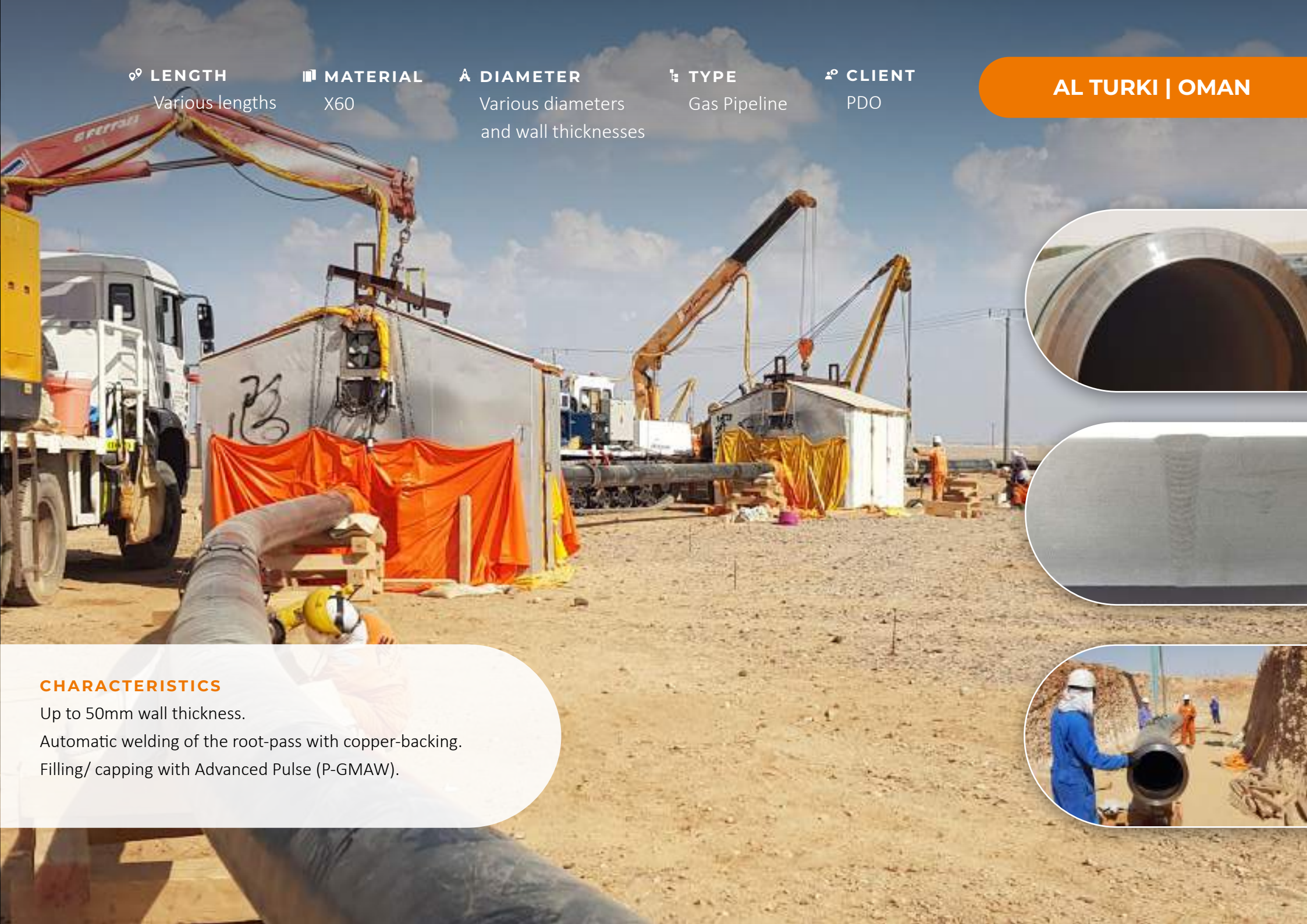
DIAMETER  
14" - 26"  
Double jointing

TYPE  
Gas Pipeline  
(Sour Service)

CLIENT  
TCO



**CHARACTERISTICS**  
EPC contract. Qapqa delivered the entire double-joint plant turn-key.



AL TURKI | OMAN

LENGTH  
Various lengths

MATERIAL  
X60

DIAMETER  
Various diameters  
and wall thicknesses

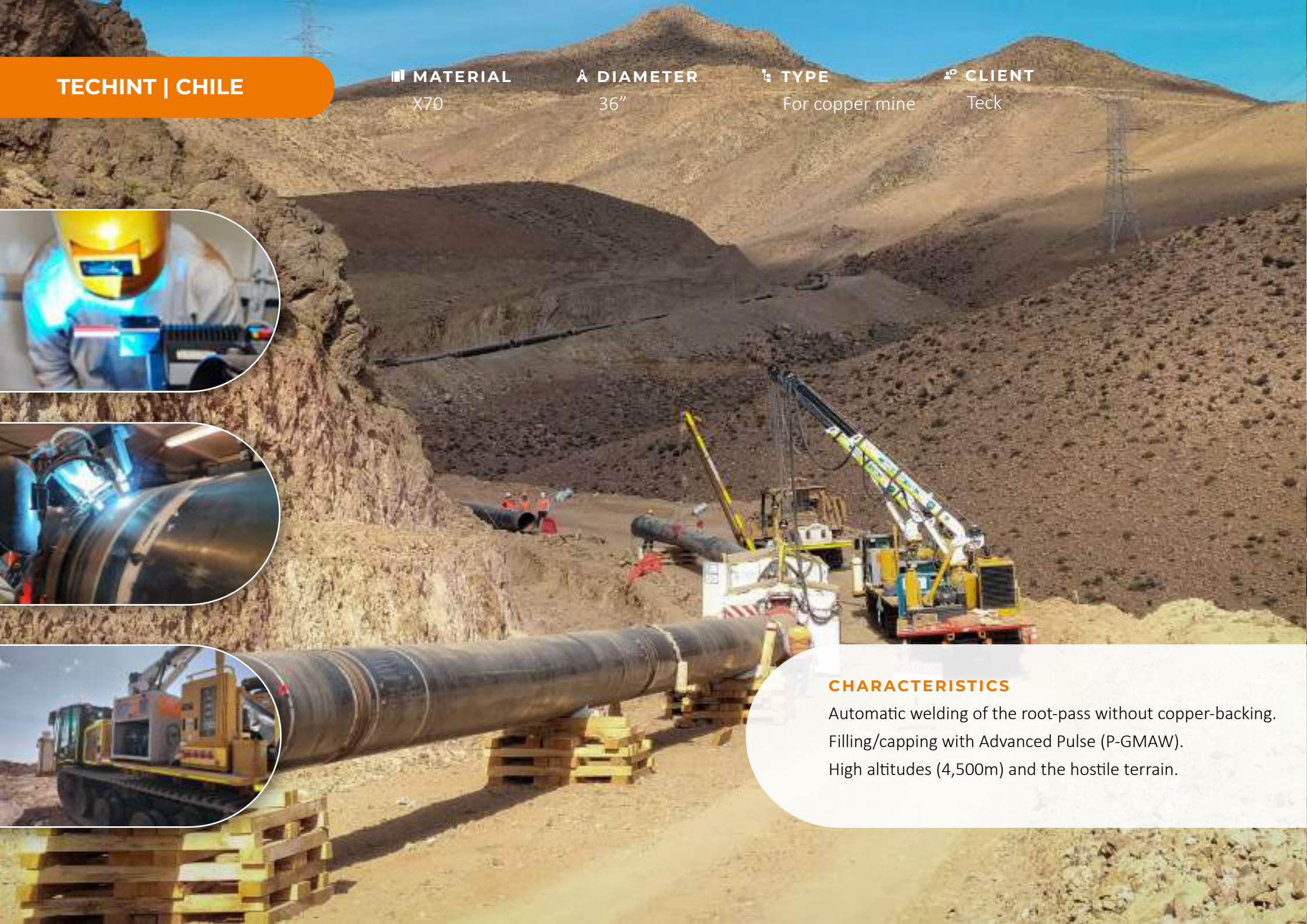
TYPE  
Gas Pipeline

CLIENT  
PDO



**CHARACTERISTICS**  
Up to 50mm wall thickness.  
Automatic welding of the root-pass with copper-backing.  
Filling/ capping with Advanced Pulse (P-GMAW).





TECHINT | CHILE

MATERIAL  
X70

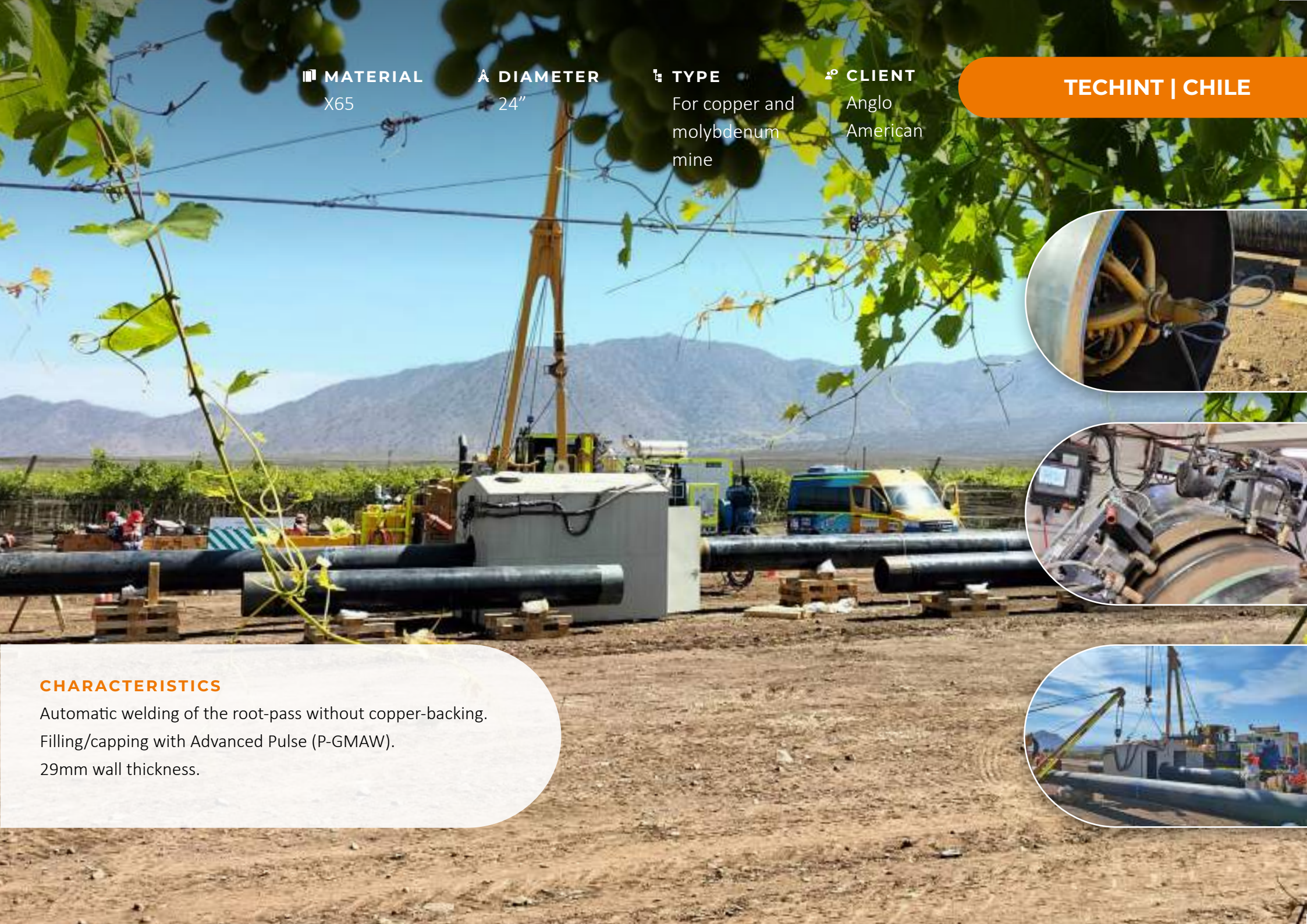
DIAMETER  
36"

TYPE  
For copper mine

CLIENT  
Teck

#### CHARACTERISTICS

Automatic welding of the root-pass without copper-backing.  
Filling/capping with Advanced Pulse (P-GMAW).  
High altitudes (4,500m) and the hostile terrain.



TECHINT | CHILE

MATERIAL  
X65

DIAMETER  
24"

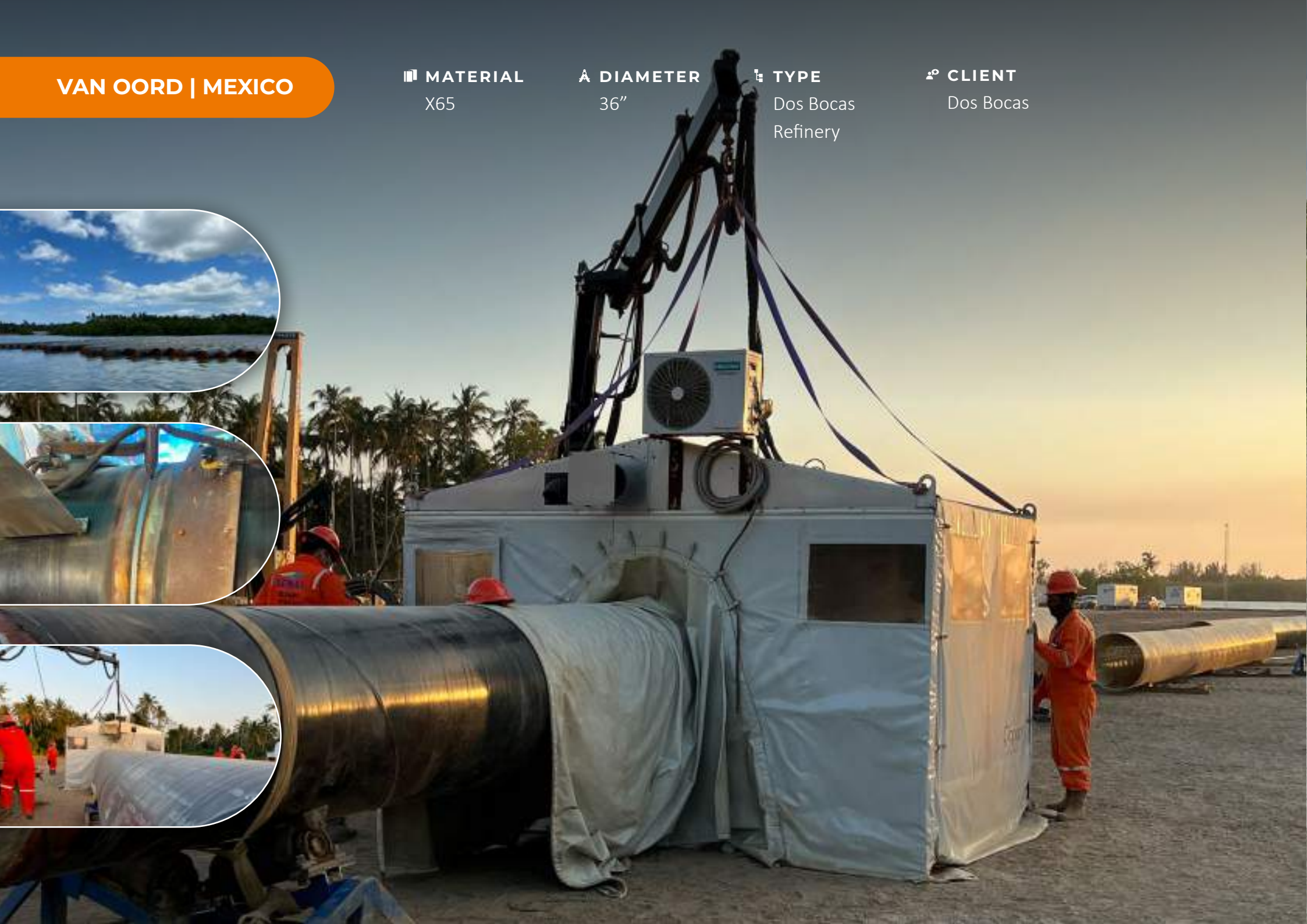
TYPE  
For copper and  
molybdenum  
mine

CLIENT  
Anglo  
American

#### CHARACTERISTICS

Automatic welding of the root-pass without copper-backing.  
Filling/capping with Advanced Pulse (P-GMAW).  
29mm wall thickness.





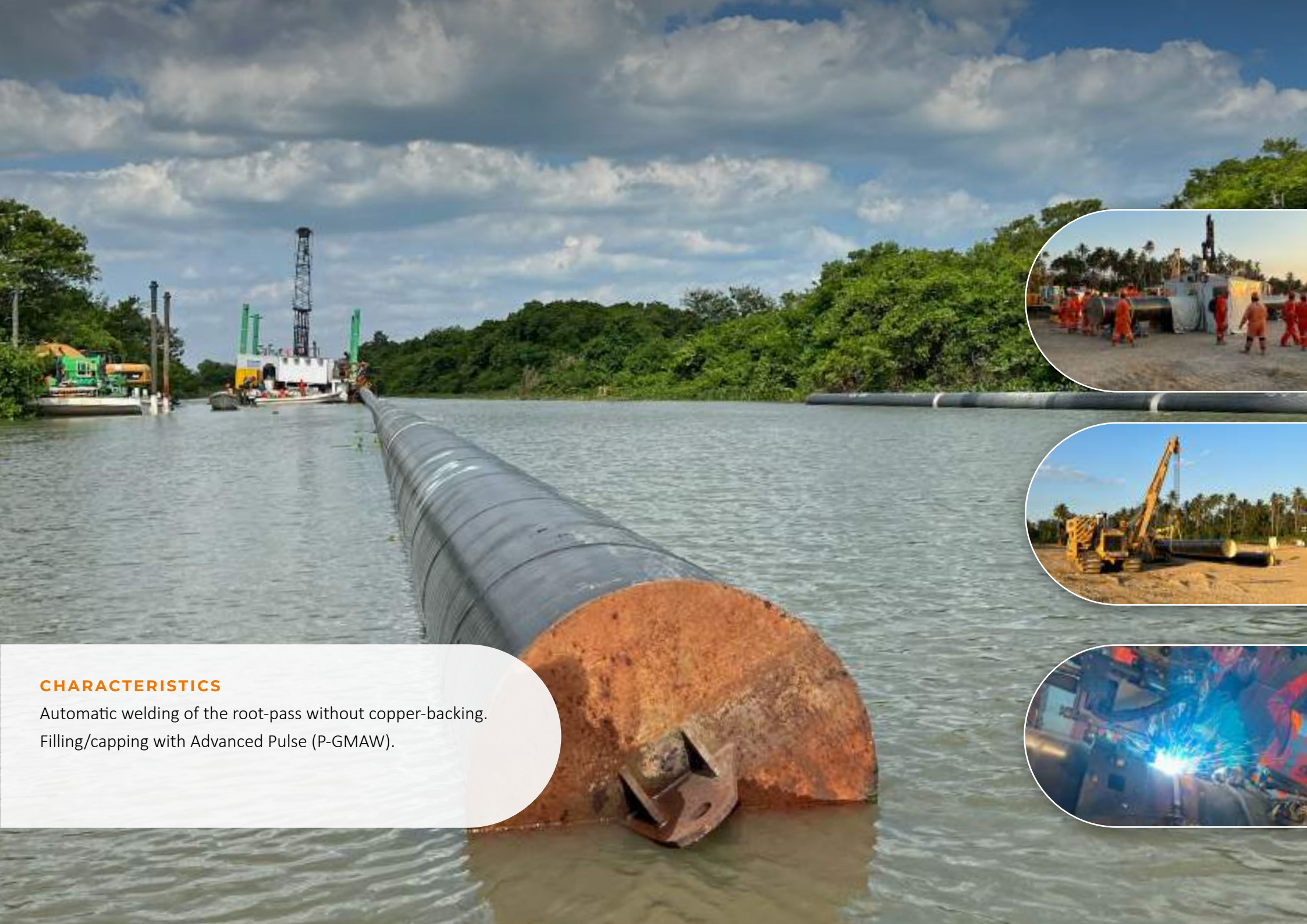
VAN OORD | MEXICO

MATERIAL  
X65

DIAMETER  
36"

TYPE  
Dos Bocas  
Refinery

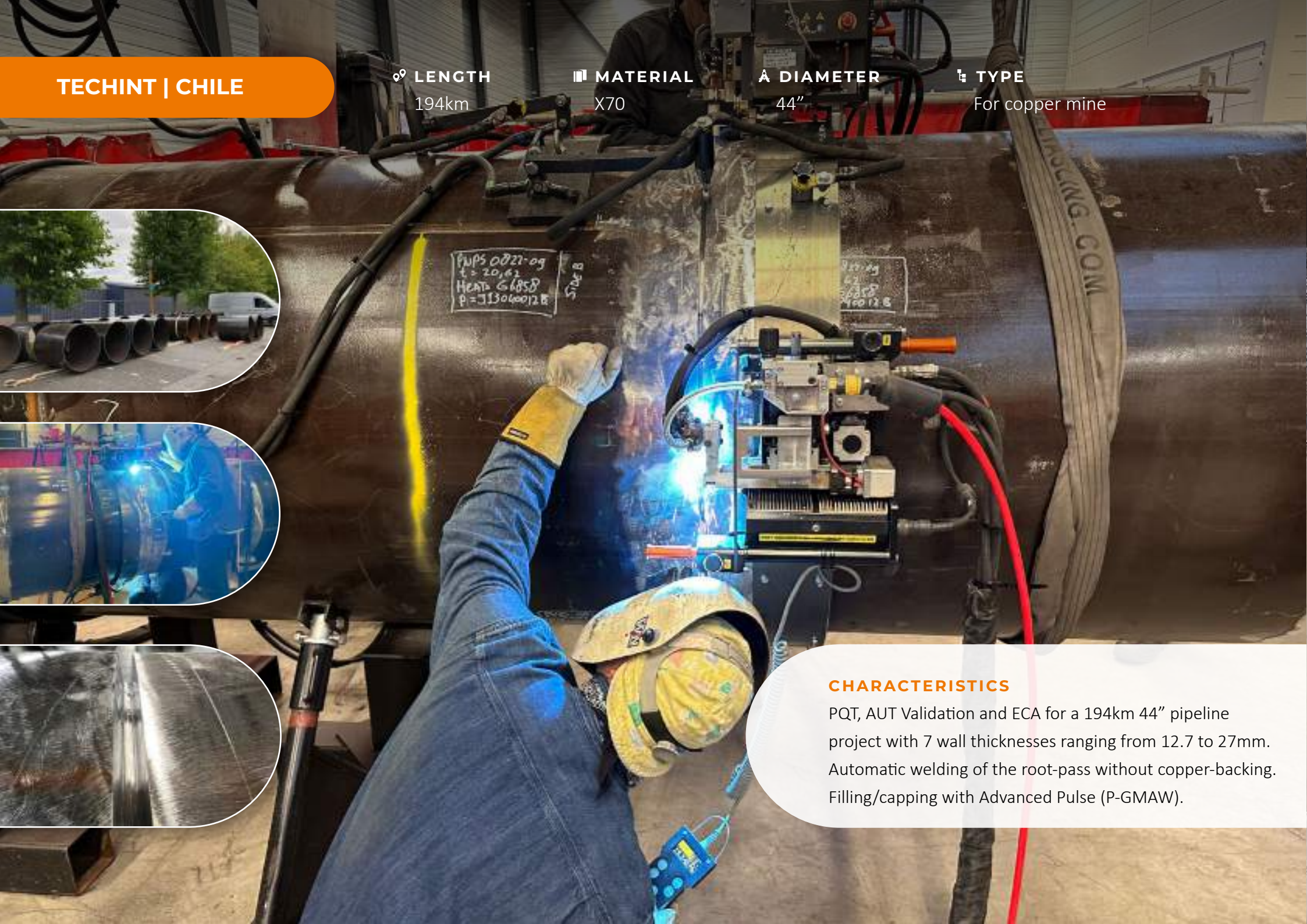
CLIENT  
Dos Bocas



CHARACTERISTICS

Automatic welding of the root-pass without copper-backing.  
Filling/capping with Advanced Pulse (P-GMAW).





TECHINT | CHILE

📏 LENGTH  
194km

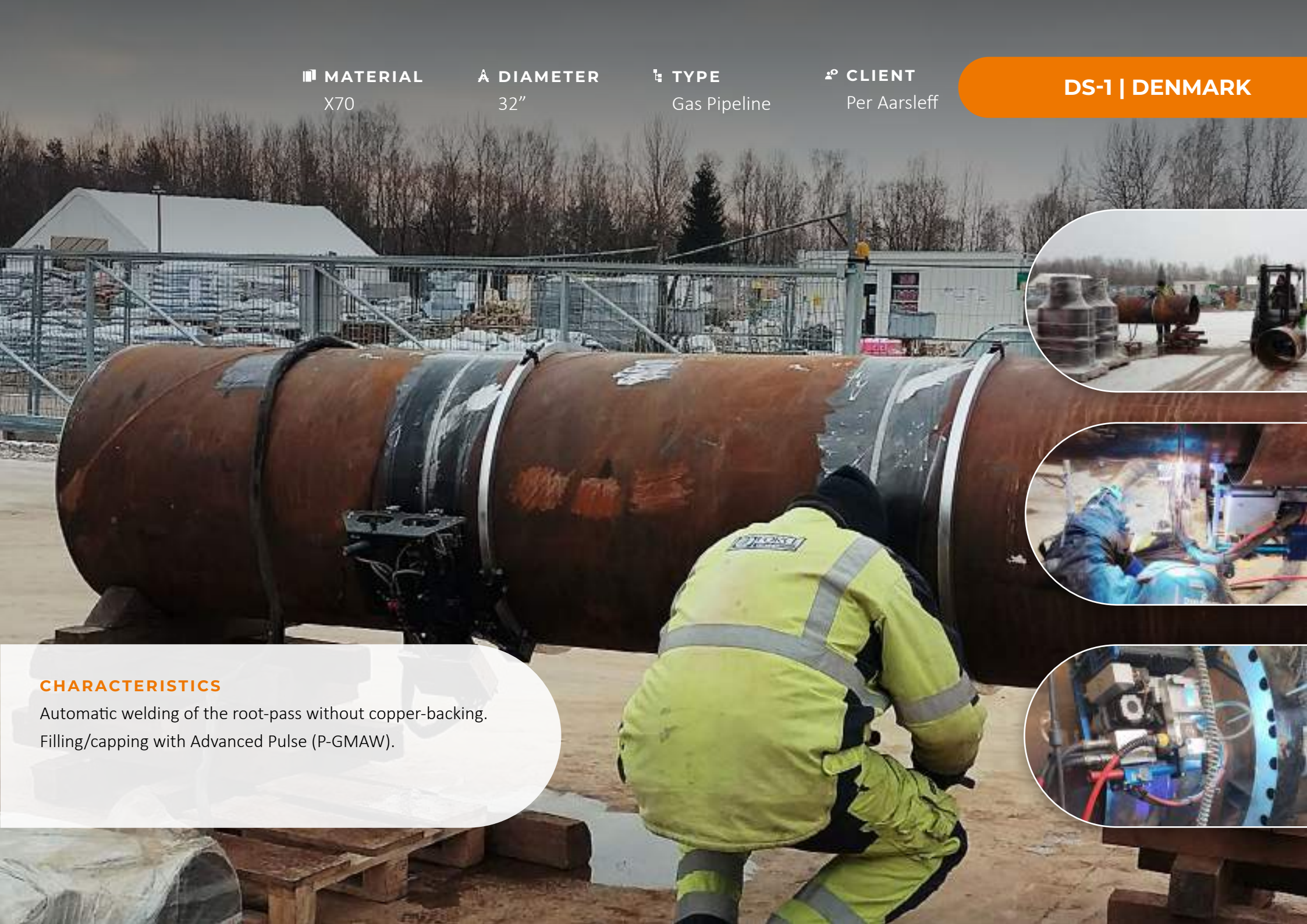
📦 MATERIAL  
X70

⌀ DIAMETER  
44"

🔧 TYPE  
For copper mine



**CHARACTERISTICS**  
PQT, AUT Validation and ECA for a 194km 44" pipeline project with 7 wall thicknesses ranging from 12.7 to 27mm. Automatic welding of the root-pass without copper-backing. Filling/capping with Advanced Pulse (P-GMAW).



DS-1 | DENMARK

📦 MATERIAL  
X70

⌀ DIAMETER  
32"

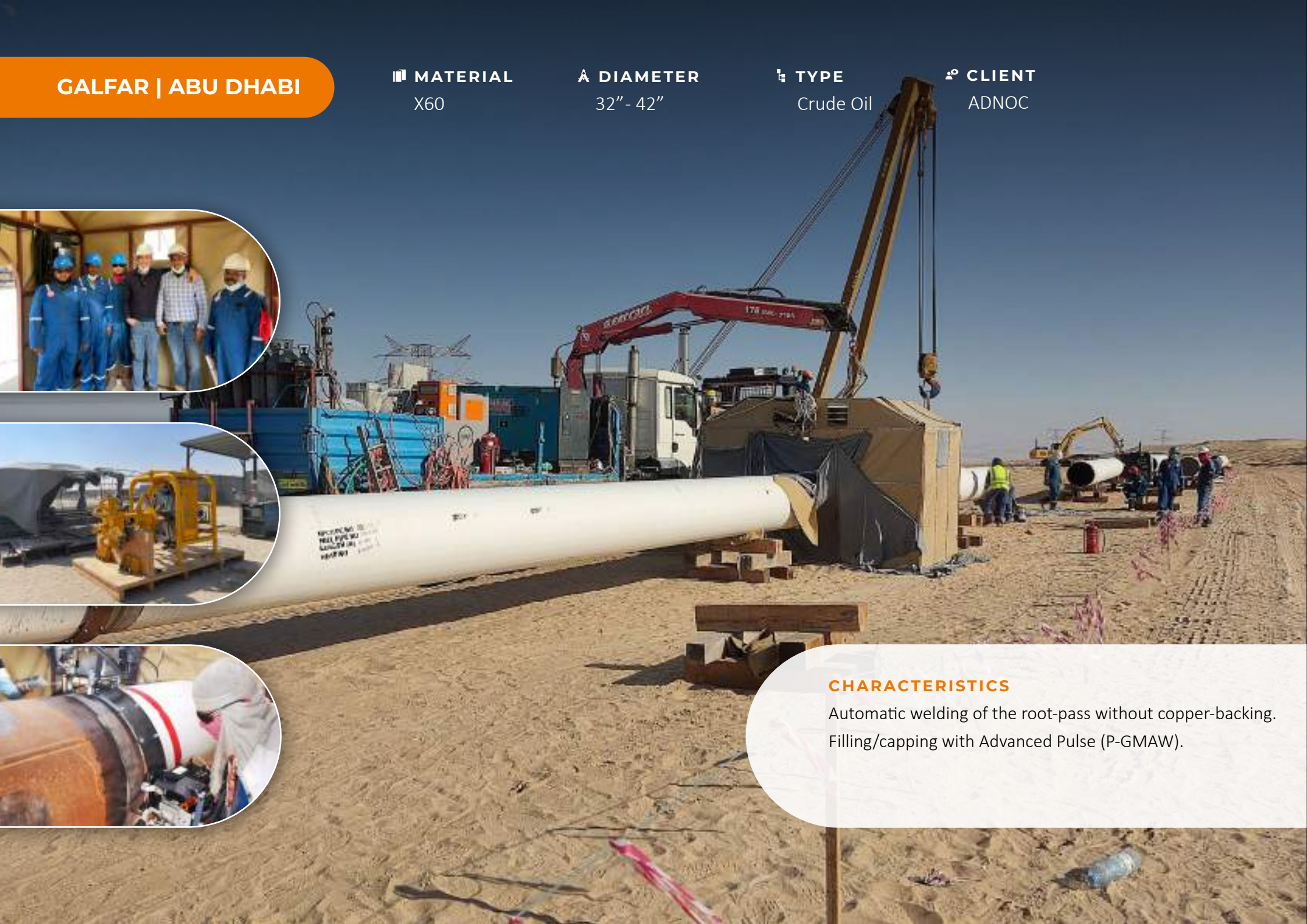
🔧 TYPE  
Gas Pipeline

👤 CLIENT  
Per Aarsleff



**CHARACTERISTICS**  
Automatic welding of the root-pass without copper-backing. Filling/capping with Advanced Pulse (P-GMAW).





**GALFAR | ABU DHABI**

**MATERIAL**  
X60

**DIAMETER**  
32" - 42"

**TYPE**  
Crude Oil

**CLIENT**  
ADNOC

# JOINING SOLUTIONS

**CHARACTERISTICS**

Automatic welding of the root-pass without copper-backing.  
Filling/capping with Advanced Pulse (P-GMAW).





#### Headquarters

##### **Qapqa BV**

De Amer 24  
8253 RC Dronten  
The Netherlands

+31 (0) 321 386 677  
[info@qapqa.com](mailto:info@qapqa.com)  
[www.qapqa.com](http://www.qapqa.com)

#### Factory

##### **Qapqa Italy S.r.l.**

Via Salvo d'Acquisto 1  
26862 Guardamiglio (LO)  
Italy

+39 037 740 0038  
[info.it@qapqa.com](mailto:info.it@qapqa.com)  
[www.qapqa.com](http://www.qapqa.com)

